

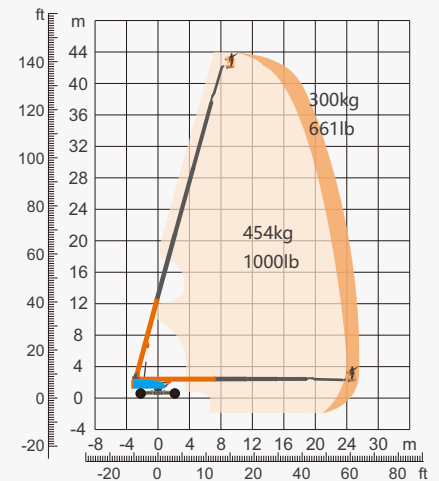
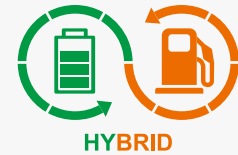
SPECIFICATIONS

Dimension	Metric	British
Max. Working Height	44.00m	144ft 4in
Max. Platform Height	42.00m	137ft 10in
Max. Operating Range(Unrestricted/Restricted)	26.20m/24.00m	86ft/78ft 9in
Max. Platform Range(Unrestricted/Restricted)	25.60m/23.40m	84ft/76ft 9in
Max. Down Probing Depth	2.00m	6ft 7in
Overall Length(Stowed)	17.00m	55ft 9in
Overall Length(Transport) A	11.93m	39ft 2in
Overall Width(Axle Expanded)	4.15m	13ft 7in
Overall Width(Axle Retracted) B	2.45m	8ft
Overall Width(Transport)	2.29m	7ft 6in
Overall Height(Stowed) C	2.82m	9ft 3in
Overall Height(Transport)	2.55m	8ft 4in
Jib Length	4.20m	13ft 9in
Platform Size(Length×Width)	2.44m×0.90m	8ft×2ft 11in
Platform Height	1.10m	3ft 7in
Turntable Tailswing	1.39m	4ft 7in
Ground Clearance	0.38m	1ft 3in
Wheelbase(Axle Expanded)	4.07m	13ft 4in
Wheelbase(Axle Retracted) D	4.30m	14ft 1in

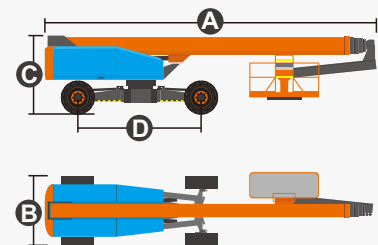
Performance		
S.W.L(Unrestricted/Restricted)	300kg/454kg	661lb/1000lb
Max. Occupants	3	3
Gradeability	45%	45%
Travel Speed(Stowed)	5.0km/h	3.11mph
Travel Speed(Raised)	0.8km/h	0.50mph
Max. Working Slope	5°	5°
Turret Rotation	360°Continuous	360°Continuous
Platform Rotation	180°	180°
Jib Movement	240°	240°
Main Boom Maximum Angle	75°	75°
Turning Radius(Inside/Outside)	2.45m/6.2m	8ft 3in/20ft 4in
Tyres	445/50-D710	445/50-D710

Weight		
Overall Weight	22000kg	48501lb

Power		
Lithium Battery	358.4V/160Ah	358.4V/160Ah
Charger	358.4V/32A	358.4V/32A
Emergency Power System	12V/110A×2	12V/110A×2
Pump Motor	360V/30kW	360V/30kW
Range Extended Engine - Kubota D1105	18.2kW	18.2kW
Hydraulic Tank	150L	39gal



Range Of Motion



FEATURES

Standard Items

- Load Sense System
- 12V/110A×2 Auxiliary Power
- Hydraulic Oil Radiator
- Harsh Environment Kits
- Fault Diagnosis System
- Turntable Protection Lock
- High Stiffness Boom System
- Fully-Opened Chassis Cover
- AC Power Cord To Platform
- Descent & Movement Alarms
- 180°Left & Right Swing Platform
- Platform Rotation Angle Monitoring
- Platform Bottoming Out Protection
- Proportional Joystick Controls
- Loose & Broken Chain Monitoring
- Fast & Slow Speed Monitoring
- Working Condition Monitoring
- Rexroth Hydrostatic Drive System
- Automatic Steering Angle Matching
- Drive Forced Shunt & Merge Function
- Negative Pressure Brake With Detection
- Real-Time Machine Status Display System
- Cat.3 Safety Architecture - ISO 13849-1
- Operator Anti-Extrusion Protection System
- Lithium Battery 358.4V/160Ah
- Pump Motor 360V/30kW
- 4.2m Amplitude Flexible Jib With Angle Detection
- 360°Turntable Continuous Rotation With Inspection
- Expandable Chassis With Proprietary Patented Design
- Horn
- Tilt Alarm
- Hour Meter
- Drive Enable
- Flashing Beacon
- Four-Wheel Drive
- Four-Wheel Steering
- In-Situ Axle Expansion
- Self-Levelling Platform



Telescopic
Boom-BT



Working
Height-44m



Jib



Hybrid-H



Rough
Terrain-RT



Brand New One-Key In-Situ Axle Expansion Technology
Global Patent Protection



Standard Container Transport

ZHEJIANG DINGLI MACHINERY CO., LTD.

Address: No.188 Qihang Road,Deqing,Zhejiang P.R.C 313219

Telephone: +86(572)8681688

E-Mail: export@cndingli.com

<https://en.cndingli.com>