

Model 800S

TELESCOPIC BOOM LIFTS



MORE ECONOMIC

- Lower hydrocarbon, carbon monoxide, particulate and NOx emissions with Stage IV-compliant engine.

MORE PRODUCTIVE

- Equipped with hydrostatic drive for easy, precise, infinitely-variable-speed manoeuvrability.

MORE ACCESS

- Conquer rough terrain with standard oscillating axle and four-wheel drive, delivering optimised grip and stability.

SMART DESIGN

- Fewer buttons and switches used to position the platform and less time spent learning to use the platform controls.



Standard Features

- 0.92 m x 2.44 m swing gate entry
- 0.92 m x 2.44 m low mount platform
- Side entry with drop bar mid rail
- Multiple function operation
- Full proportional drive joystick control with integral thumb steer switch
- Full proportional main boom and swing joystick control
- Multiple speed control for telescope and platform rotate
- Selectable creep speed on drive / lift and swing functions
- 180 degree powered platform rotator
- Platform console machine status light panel¹
- Load sensing system
- AC cable to platform
- Deutz D2011 (46kW) diesel engine
- Engine distress warning/shut down system²
- Gull-wing hoods
- Swing-out engine tray
- Control ADE® - Advanced Design Electronics System
- Hydrostatic drive transmission
- Horn
- 4 degree tilt alarm and indicator light
- 18 - 625 foam filled lug tread tyres
- Fixed-width frame (extending axles not required)
- Load sensing system
- Lifting/tie down lugs
- Hour meter
- Ground control selector switch with key lock
- Catalytic Purifier Muffler
- Platform tool tray
- 12V DC auxiliary power

Standard Specifications

- | | |
|----------------------|----------------------|
| • Diesel Engine | Deutz D2011 (46kW) |
| • Fuel Tank Capacity | 117 L |
| • Hydraulic System | 235 L |
| • Auxiliary Power | 12V DC |
| • Tyres | 18 - 625 Foam Filled |

Accessories & Options

- 0.91 m x 1.83 m low mount platform
- 0.76 m x 0.91 m low mount platform, rear entry⁷
- Side entry with inward swing gate
- 13 mm air line to platform
- Sheet metal hoods
- Spark arresting type muffler
- Four wheel drive
- Oscillating front axle
- On-board 4,000 W generator
- SkyPower® package 7,500 watt on-board generator
- SkyWelder® package 250 amp welder in the platform³
- Nite-Bright® package⁴
- All motion alarm
- Light package⁵
- Platform worklights
- Head and tail lights
- Flashing amber beacon
- Plugs & Sockets
- Hostile environment package⁶
- Hydraulic oil cooler
- Skyguard with beacon
- Skyguard without beacon
- Container storage tray
- ClearSky Locate
- ClearSky CAN

¹ Provides indicator lights at platform control console for system distress, low fuel, tilt light, and foot switch status.

² Low oil pressure and high coolant temperature alarms with shut-down enabled/disabled by analyser.

³ Available when integrated with the SkyPower® package.

⁴ Consists of six 40-watt lights, four turntable mounted lights and two platform mounted lights.

⁵ Includes platform mounted work lights and head & tail lights.

⁶ Includes console cover, boom wipers and cylinder bellows.

⁷ Available only with drop bar type entry

⁸ Provides indicator lights at platform control console for system distress, low fuel, tilt light, and foot switch status working envelope.

Model 800S

TELESCOPIC BOOM LIFTS

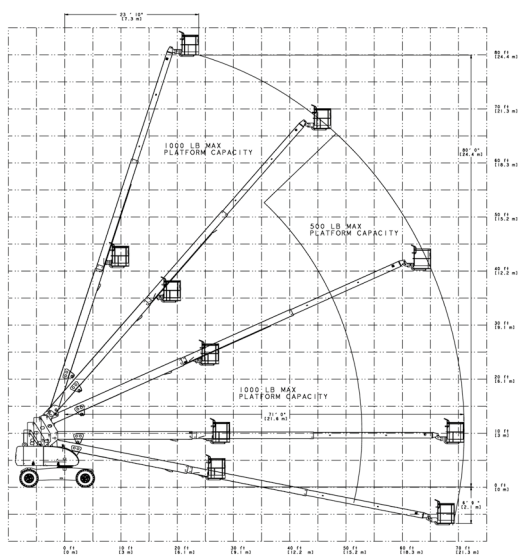
Performance

• Working Height	26.38 m
• Platform Height	24.38 m
• Horizontal Outreach	21.64 m
• Working Outreach **	22.29 m
• Swing (Continuous)	360°
• Platform Capacity (Restricted)	450 kg
• Platform Capacity (Unrestricted)	227 kg
• Platform Rotator (Hydraulic)	180°
A. Platform Size	0.91 m x 2.44 m
B. Overall Width (Axles Retracted)	2.49 m
C. Tailswing (working condition)	1.42 m
D. Stowed Height	3.02 m
E. Stowed Length	11.35 m
F. Wheelbase	3.05 m
G. Ground Clearance	0.28 m
• Machine weight *	15,800 kg
• Maximum Ground Bearing Pressure	5.6 kg/cm ²
• Maximum Tyre Load	N/A
• Drive Speed 2WD	5.6 km/h
• Drive Speed 4WD	5.6 km/h
• Gradeability 2WD	25%
• Gradeability 4WD	45%
• Axle Oscillation	0.20 m
• Turning Radius – Inside	3.81 m 4WS
• Turning Radius – Outside	6.02 m 4WS

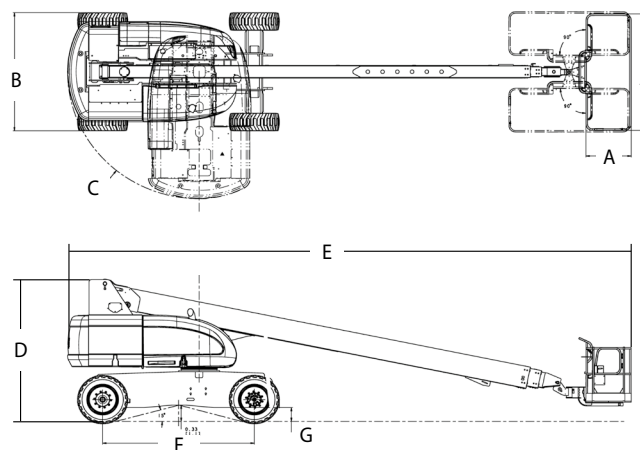


* Certain options or country standards may increase weight and/or dimensions.
** Incl. 0.65 m outreach beyond platform

Reach Diagram



Dimensions



IMPORTANT

JLG is continually researching and developing products and reserves the right to make modifications without prior notice. All data in this document is indicative. Certain options or country standards will increase weight. Specifications may change to meet country standards or with the addition of optional equipment.

Due to continuous product improvements, JLG Industries reserves the right to make specification and/or equipment changes without prior notification.

JLG®

JLG EMEA BV

Polaris Avenue 63
2132 JH Hoofddorp
The Netherlands
Phone: +31 (0)23 565 5665
www.jlg.com

An Oshkosh Corporation Company